



BEEHIVE

ALES & SPIRITS | EASTON TOWN CENTER

PRIVATE PARTY

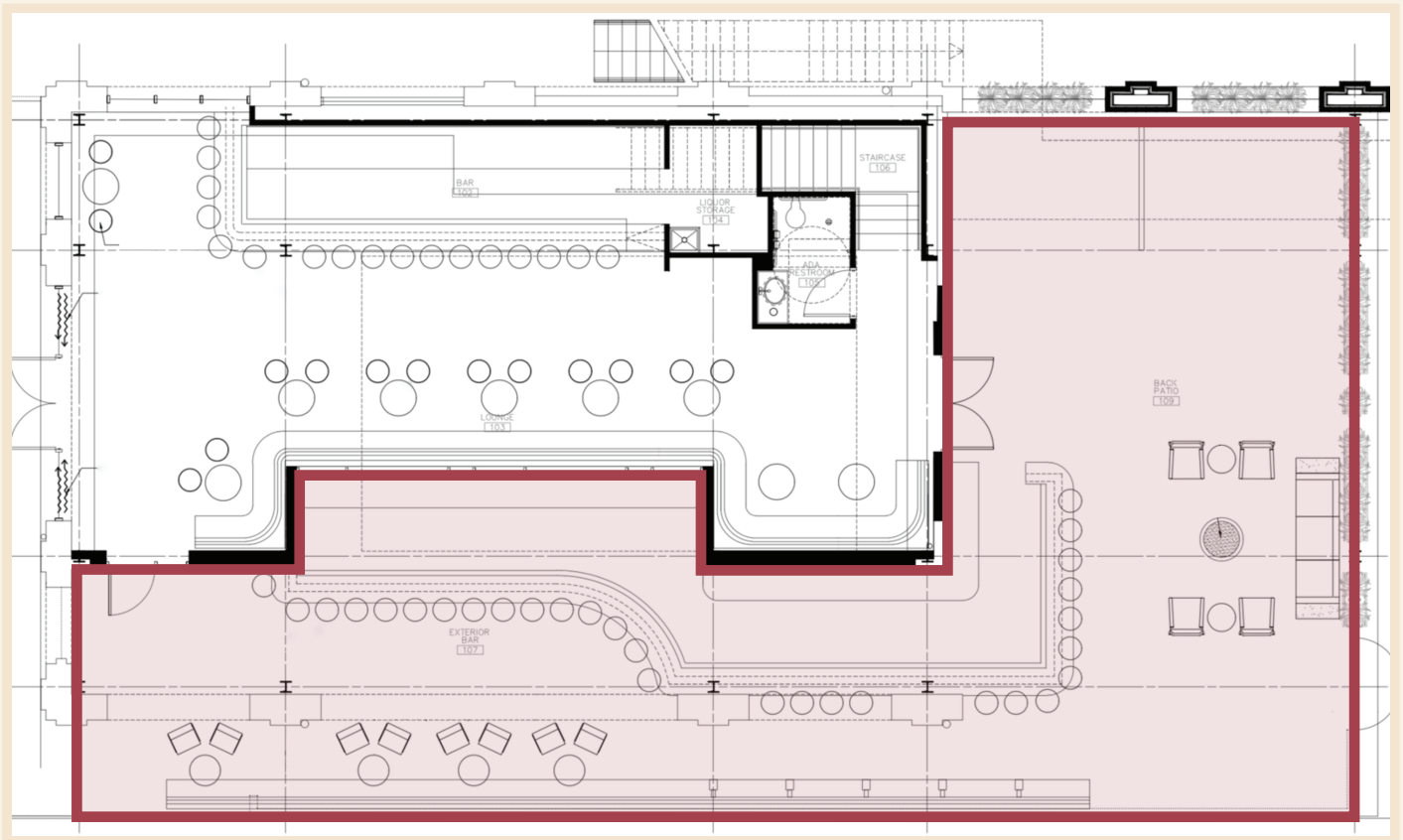
INFORMATION

CLOVER

ENTIRE OUTDOOR BAR

This space can accommodate groups of up to 200 people and has a private bar with a bartender and four TVs. There is a \$1,200 bar spending minimum to reserve the space Sunday - Thursday for any 3-hour timeframe during normal operating hours. There is a \$4,000 bar spending minimum to reserve the space Friday - Saturday for any 3-hour timeframe until 9pm.

***During the winter months, this space is only partially covered/enclosed in isinglass and heated - the back courtyard is fully outdoor.**



BUCKWHEAT

FULL SIDE BAR

This space can accommodate groups of up to 70 people. There is a \$500 bar spending minimum to reserve the space Sunday - Thursday for any 3-hour timeframe during normal operating hours. There is a \$1,500 bar spending minimum to reserve the space Friday - Saturday for any 3-hour timeframe until 9pm.

*During the winter months, this space is enclosed in isinglass and heated.



ALFALFA

BACK COURTYARD

This space can accommodate groups of up to 100 people. There is an \$400 bar spending minimum to reserve the space Sunday - Thursday for any 3-hour timeframe during normal operating hours. There is a \$2,500 bar spending minimum to reserve the space Friday - Saturday for any 3-hour timeframe until 9pm.

*During the winter months, this space is not covered/enclosed, so reservations will not be available.



ROSEMARY

PARTIAL SIDE BAR

Rosemary is a smaller portion of the Buckwheat area. This space can accommodate groups of up to 50 people. There is a \$400 bar spending minimum to reserve the space Sunday - Thursday for any 3-hour timeframe during normal operating hours. There is a \$1,200 bar spending minimum to reserve the space Friday - Saturday for any 3-hour timeframe until 9pm.

***During the winter months, this space is enclosed in isinglass and heated.**



ENTIRE INDOOR BAR

This space can accommodate groups of up to 150 people and has a private bar with a bartender and two TVs. There is a \$1,000 bar spending minimum to reserve the space Sunday - Thursday for any 3-hour timeframe during normal operating hours. There is a \$3,000 bar spending minimum to reserve the space Friday - Saturday for any 3-hour timeframe until 9pm.

If your group size is 60 or less, you may reserve half of the indoor bar. There is a \$500 bar spending minimum to reserve half of the indoor bar Sunday - Thursday for any 3-hour timeframe during normal operating hours. There is a \$1,500 bar spending minimum to reserve the space Friday - Saturday for any 3-hour timeframe until 9pm.



BAR OPTIONS

INDIVIDUAL TABS

Guests open their own tab and/or pay as they go. All individual bar tabs will apply to the bar spending minimum.

GROUP TAB

There are several different options to running a group tab for your part



OPEN BAR:

Run a group tab for the entire party.



OPEN BAR WITH EXCEPTIONS:

Run a group tab customized to include or exclude certain drinks (Ex. No shots or top-shelf liquor). If a guest wants a drink that is excluded, they may purchase it on their own individual tab. All tabs will apply to the bar spending minimum.



RUN A GROUP TAB FOR A CERTAIN PERIOD OF TIME:

(Ex. The first 2 hours). After the specified time, the party will switch to individual tabs. All tabs will apply to the bar spending minimum.



RUN A GROUP TAB UP TO A CERTAIN AMOUNT:

(Ex. The first \$300). Once the group tab hits the specified amount the party will switch to individual tabs. All tabs will apply to the bar spending minimum.



USE OF DRINK TICKETS TO BE APPLIED TO GROUP TAB:

(Ex. Each guest receives 1 drink ticket to purchase beer, wine, or well liquor.)

PLANNING INFO

SPENDING MINIMUMS

We do not require a rental fee or deposit, we just require that your party meets its bar spending minimum. All group and individual bars tabs will apply to the spending minimum - tax and gratuity are not included.



ENTIRE INDOOR BAR:

There is a \$1,000 bar spending minimum to reserve the space
Sunday - Thursday for any 3-hour timeframe during normal operating hours.

There is a \$3,000 bar spending minimum to reserve the space
Friday - Saturday for any 3-hour timeframe until 9PM.

**IF YOUR GROUP SIZE IS 60 OR LESS, WE CAN RESERVE HALF OF THE INDOOR BAR
USING A ROOM DIVIDER.**

There is a \$500 bar spending minimum to reserve half of the indoor bar
Sunday - Thursday for any 3-hour timeframe during normal operating hours.

There is a \$1,500 bar spending minimum to reserve the space Friday - Saturday for any
3-hour timeframe until 9pm.



BUCKWHEAT:

There is a \$500 bar spending minimum to reserve the space
Sunday - Thursday for any 3-hour timeframe during normal operating hours.

There is a \$1,500 bar spending minimum to reserve the space
Friday - Saturday for any 3-hour timeframe until 9PM.



ROSEMARY:

There is a \$400 bar spending minimum to reserve the space
Sunday - Thursday for any 3-hour timeframe during normal operating hours.

There is a \$1,200 bar spending minimum to reserve the space
Friday - Saturday for any 3-hour timeframe until 9PM.



ALFALFA:

There is a \$400 bar spending minimum to reserve the space
Sunday - Thursday for any 3-hour timeframe during normal operating hours.

There is a \$2,500 bar spending minimum to reserve the space
Friday - Saturday for any 3-hour timeframe until 9PM.



CLOVER:

There is a \$1,200 bar spending minimum to reserve the space
Sunday - Thursday for any 3-hour timeframe during normal operating hours.

There is a \$4,000 bar spending minimum to reserve the space
Friday - Saturday for any 3-hour timeframe until 9PM.

PLANNING INFO

FOOD/ CATERING

While Beeline does not serve food, we do allow food/catering to be brought in or delivered to the bar. We can provide a folding table(s) with a black tablecloth to place the food on, buffet style. Please be sure to provide all necessary plates, utensils, etc. as we do not have these on-site

PREFERRED CATERING- Thunderdome Restaurant Group is our preferred caterer for events. Thunderdome offers 2 catering menus for our location: Bakersfield and The Eagle. Click [HERE](#) for their catering information and menus. All catering orders must be organized with Thunderdome directly. Click [HERE](#) for their catering webpage. *Due to our partnership, there is a 10% venue catering fee added to any catering orders to our location.

OUTSIDE CATERING- If our preferred catering does not work for your event, you are welcome to bring your own food or use an outside caterer. All outside catering orders must be organized with the caterer directly. *There is a \$50 outside food/catering fee added to your tab on-site.

PARTIES ARE WELCOME TO BRING IN DESSERT FOR NO FEE!

DECORATIONS/ SETUP

Parties are welcome to decorate the reserved space. Please note we do not allow glitter or confetti of any kind and tape may not be used on any wallpaper throughout the bar. Parties may arrive 15 minutes prior to the reserved start time for setup. Please let us know if you will need additional time.

MUSIC

Parties are not able to play their own music, however, there will be music playing throughout the entire bar. Beeline does not allow DJs or live music for parties

CONFIRMATIONS/ DEPOSITS

A digital contract and card on file is required to secure a specific date. Parties must meet the agreed-upon spending minimum at the conclusion of the event. Any damages incurred to Beeline will be charged to the host. You will be notified of any charges. All private party spaces are simply reserved spaces within the bar. Ticketed events and events with cover charges are prohibited at Beeline.

CANCELLATION POLICY

A \$100 cancellation fee will be applied if we are not given a 14-day notice of cancellation.

NO-SHOW POLICY

A \$300 no-show fee will be applied if your entire party fails to show up without cancelling first.

METHODS OF PAYMENT

Payment is due immediately upon completion of the party. We accept MasterCard, Visa, Discover, American Express, and cash. We cannot accept payment before the day of the services rendered.

TAX & GRATUITIES

All beverage prices are subject to a state sales tax. There is no automatic gratuity added to any beverage sales. We suggest leaving a 20% gratuity for the staff working your event.

AT BEELINE, OUR GOAL IS TO MAKE THE PLANNING OF YOUR EVENT AS STRESS-FREE AND ENJOYABLE AS POSSIBLE!

BEELINE IS LOCATED AT:

**3989 MERCHANTS ROW
COLUMBUS, OH 43219**

614.532.5071 | THEBEELINEBAR.COM

TO RESERVE A PRIVATE SPACE, CONTACT OUR PRIVATE PARTY SALES MANAGER AND MENTION BEELINE-EASTON, OR SUBMIT AN INQUIRY ONLINE:

OFFICE: 513.721.0083 X1023 | EVENTS@FOUREG.COM

WWW.BEELINEEASTON.COM/PRIVATE-PARTIES



WWW.FOUREG.COM